

Natura 2000 in Hungary

designation, management plans, financing

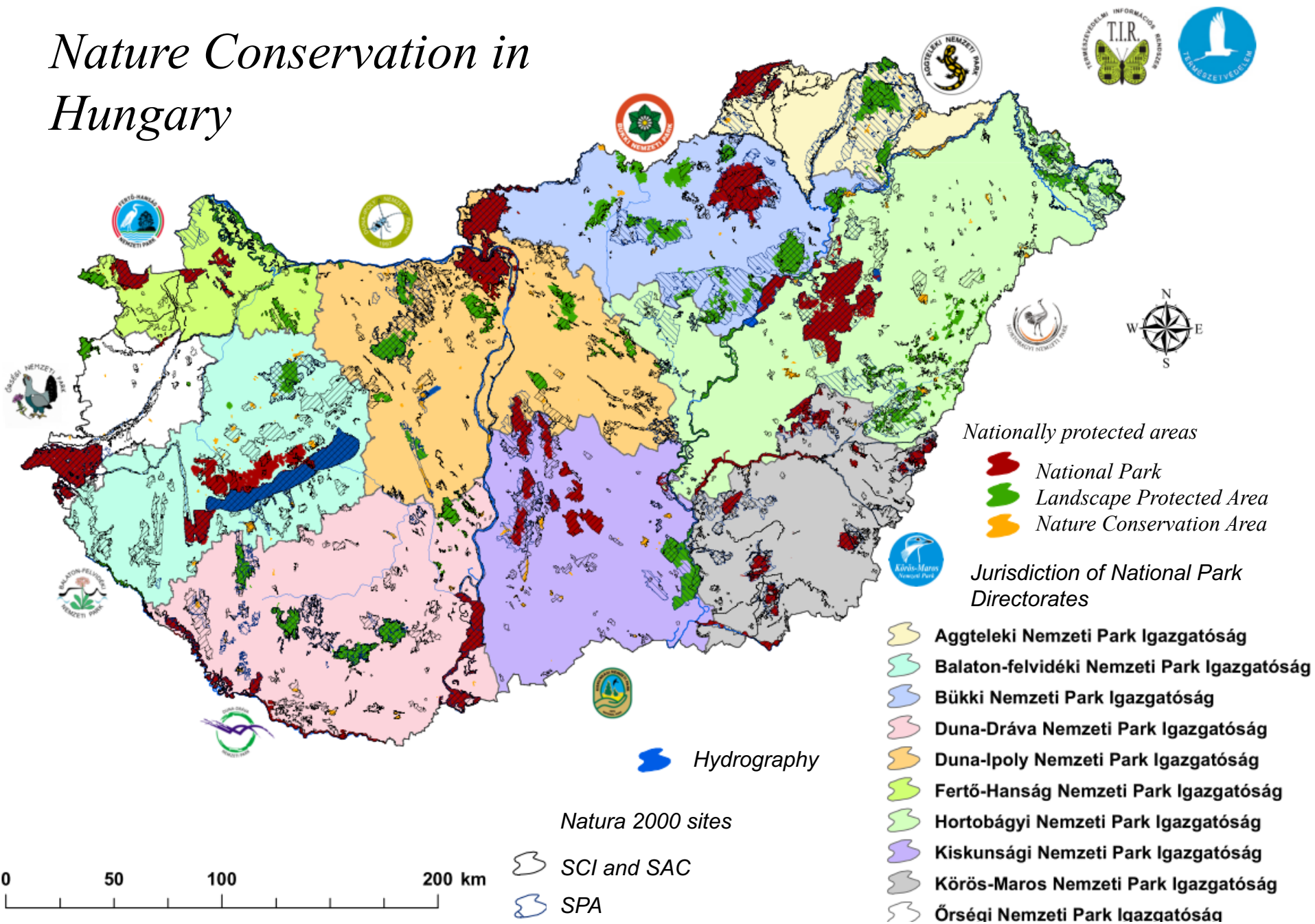
SK-HU Working Group on Nature
Conservation and Landscape
Protection

Dunajská Streda, 27 February 2018

András Schmidt
Deputy Head of Department for Nature
Conservation
Ministry of Agriculture

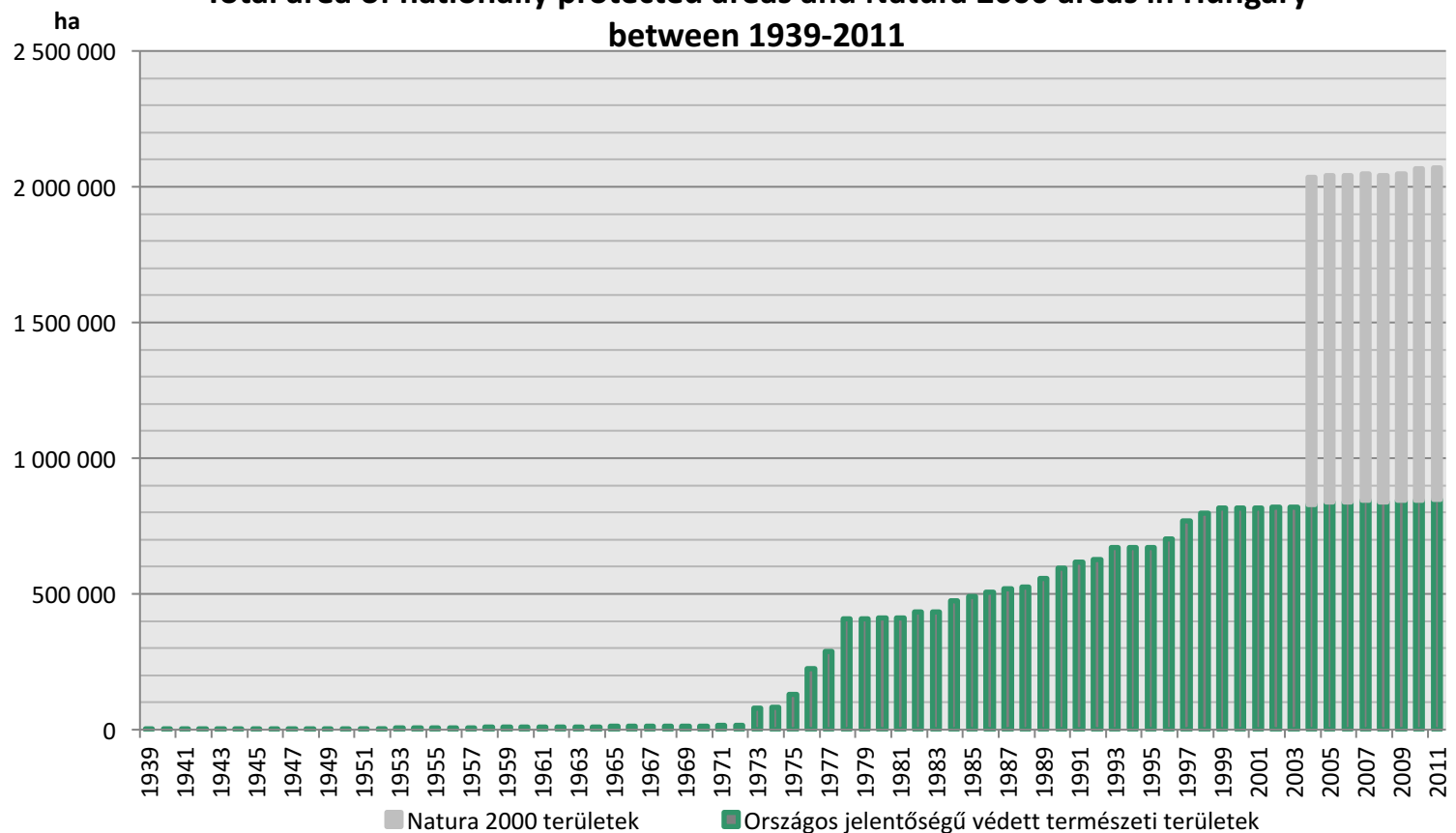


Nature Conservation in Hungary





**Total area of nationally protected areas and Natura 2000 areas in Hungary
between 1939-2011**





Natura 2000 in legislation

Main transposition of EU legislation on Natura 2000 in one Government Decree (275/2004) (both SPAs and SCIs, SACs)

Land parcel numbers and maps of all sites in a ministerial decree (Decree 14/2010 of the Minister of Environment and Water)

HD Article 6(1) (necessary conservation measures) is applied to all sites from the establishment of the network

Natura 2000 is constantly integrated into more and more pieces of legislation of all kinds of sectors (e.g. water management, spatial planning etc.)

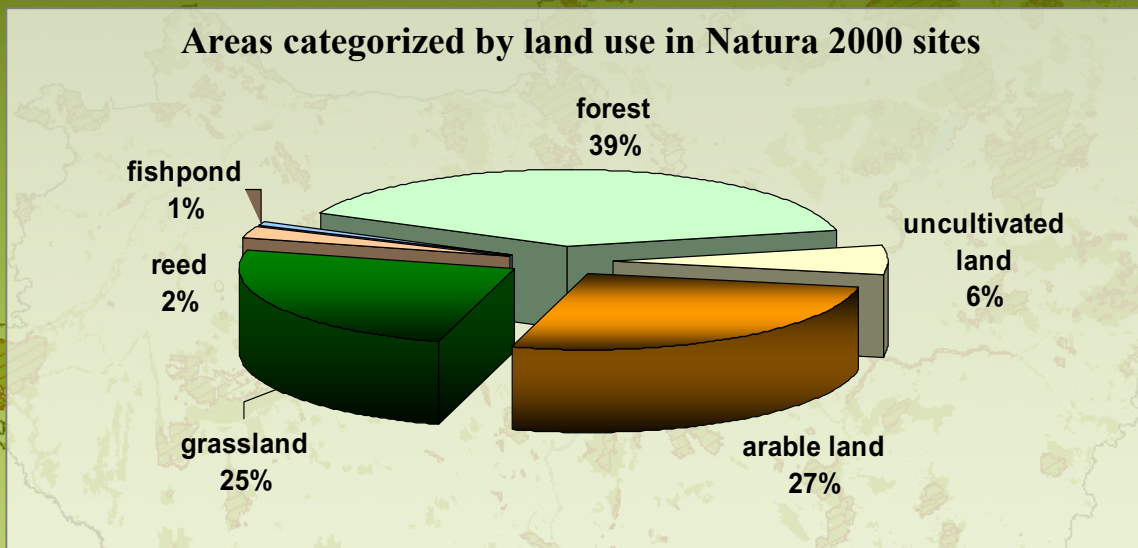


Natura 2000 network in Hungary facts and figures



~500 000 ha

~16 000 ha



~500 000 ha

~50 000 ha

 Protected areas
 Natura 2000 sites



Sufficiency



- Designation is considered complete since October 2011 (HD sites, and no infringement for BD sites)
- SAC designation is also complete, but COM has started an EU Pilot process
 - the disputed aspect is the establishment of conservation measures for each site
 - HU response: management planning



Management planning

- Site specific management plans exist for 312 SACs (out of 479) and 19 SPAs (out of 56) <http://www.termeszettvedelem.hu/elfogadott-fenntartasi-tervek>
 - assisted by guidance issued by the Ministry of Agriculture
 - mostly funded by EARDF, LIFE and Swiss Contribution, from 2015 national source too
 - **no binding force**, but helps managers and authorities
- Management plans of protected areas fully overlapping with Natura 2000 sites (12SACs+1SPA) **binding force**
- Preparatory documents for management plans of protected areas fully overlapping with N2K sites (23 SACs and 6 SPAs) **no binding force yet**
- Forest management plans incorporating Natura 2000 aspects in sites covered $\geq 50\%$ by forests (74) **binding force**
- 49/22 more site-specific plans in 2017/2018, and the remaining by 2020



Financing



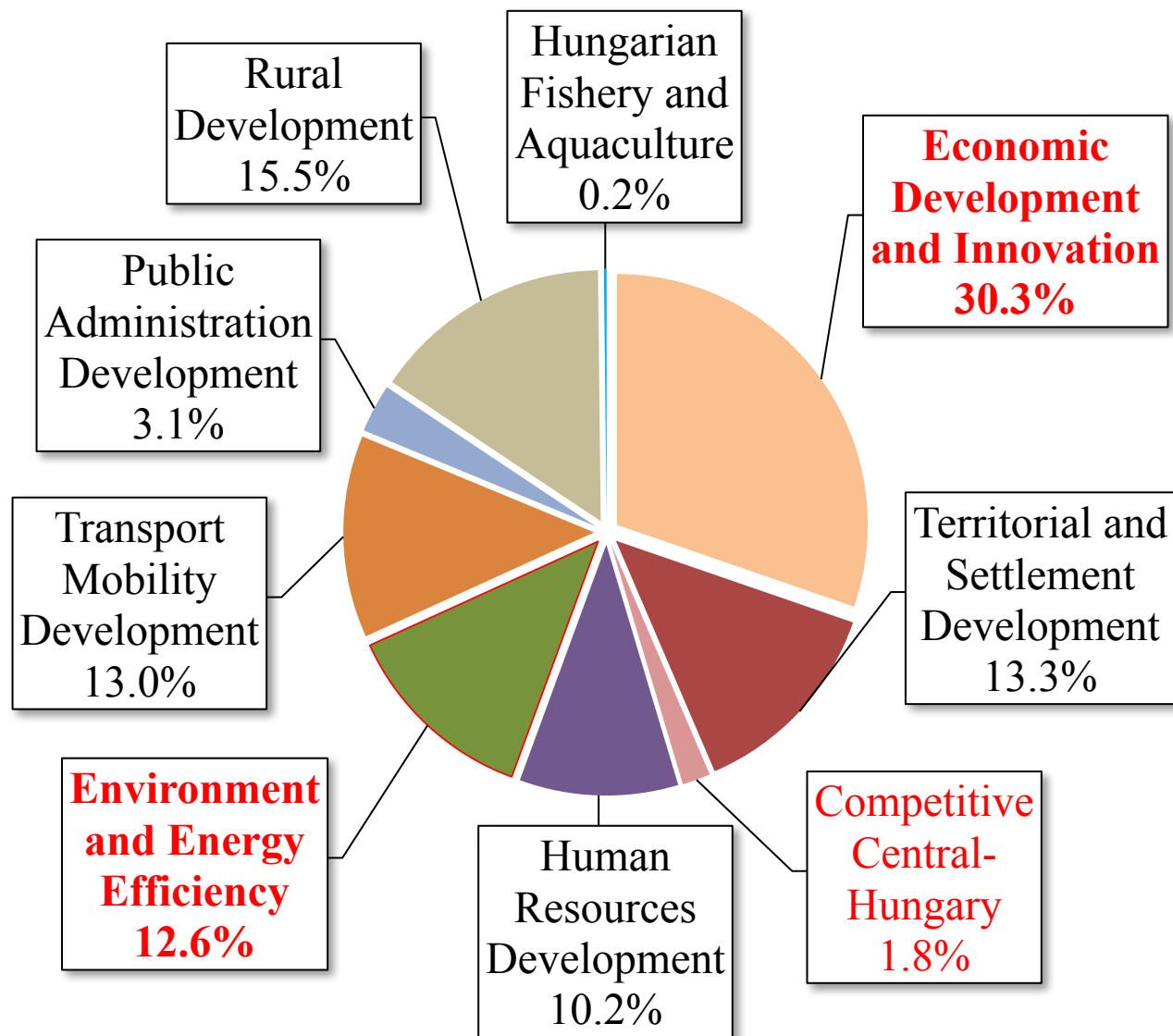
- Land use regulations on Natura 2000 sites
 - Government Decree No. 269/2007 on regulations for Natura 2000 grasslands (with compensation payments)
 - Government Decree No. 41/2012 on compensation payments from EARDF for Natura 2000 forest management
- Voluntary agri-environmental schemes
- Fisheries Operational Programme
- Investment programmes: Environment and Energy OP, LIFE etc.



OPs for 2014-2020



Total funding:
€ 25 billion EU
financing
+
15% national
contribution
+
Private funding
(where applicable)





Our planning framework for nature (PAF vs. OPs)



PRIORITISED ACTION FRAMEWORK FOR NATURA 2000

Conservation priorities (9)

- (1) Wetlands and floodplains
- (2) Aquatic habitats
- (3) Lowland grasslands and forests
- (4) Montane woodlands
- (5) Marginal habitats (foothills)
- (6) Areas under intensive use
- (7) Research, monitoring, ex-situ conservation
- (8) Interpretation, awareness raising, capacity building
- (9) Sustainable use of socio-economic benefits

Measures (41)

1. Management (13 measures)
2. Restoration of habitats (10 measures)
3. Research, monitoring (8 measures)
4. Planning, interpretation, capacity building (7 measures)
5. Sustainable use (3 measures)

OPERATIONAL PROGRAMMES

Rural Development OP

Fisheries OP

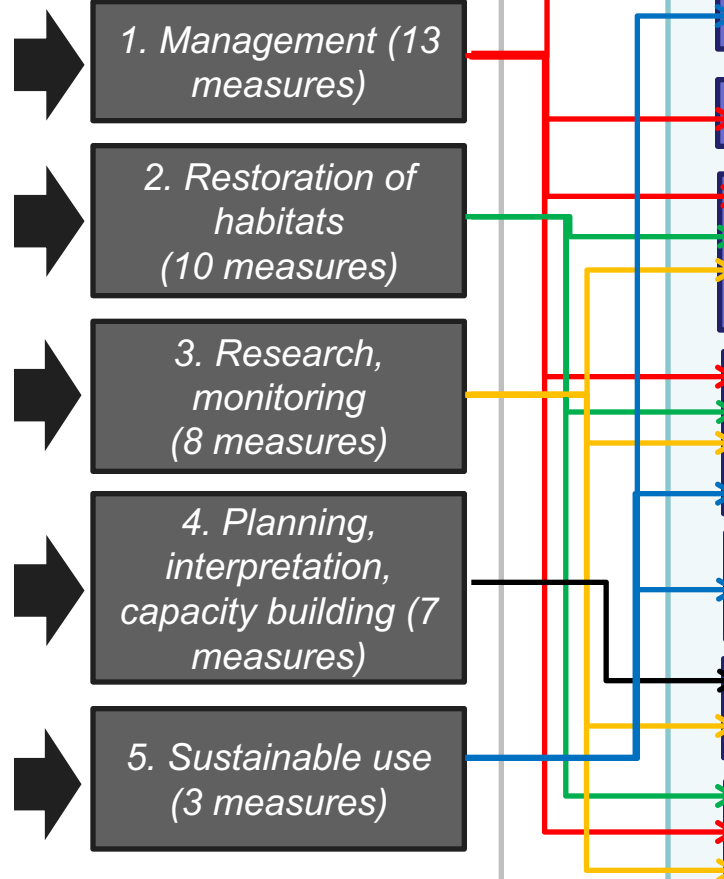
Environment and Energy Efficiency OP

Competitive Central Hungary OP

Economy and Innovation OP

INTERREG (CBC)

LIFE NATURE





Concrete objectives to 2020



- **Measures to improve conservation status implemented on at least 5% of the national Natura 2000 network**
- **Infrastructure for nature conservation management in place on at least 50% of sites managed by national park directorates**
- **Compulsory management prescriptions in place on all Natura 2000 grasslands and fisheries and compensated for where applicable**
- **Support for voluntary Natura 2000 measures available on all cultivated Natura 2000 land**
- **Natura 2000 management plans or equivalent management documents available for all Natura 2000 sites**
- **The share of „unknown” species reduced by 50%**
- **Well documented monitoring methodology is available for all species and habitats of community importance**





Environment and Energy Efficiency OP (PA4)



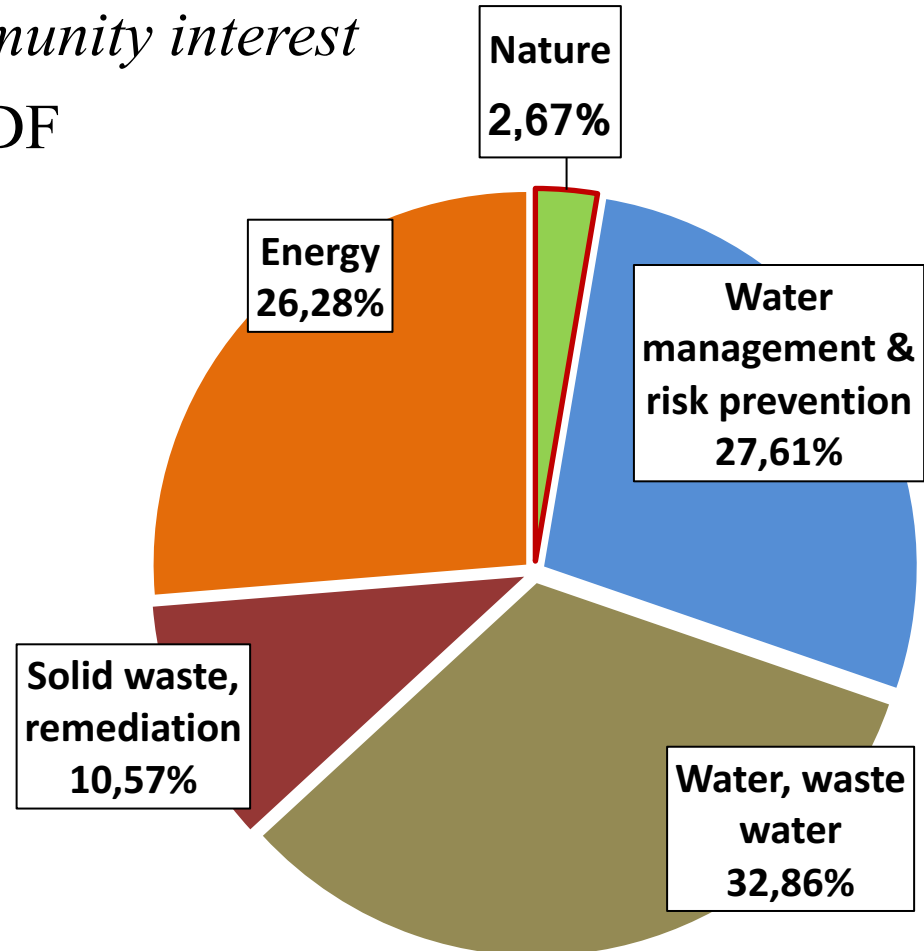
Priority Axis 4 – Investments in nature and biodiversity:

Improving the conservation status and condition of natural values and areas protected and/or of community interest

Funding (PA4): € 103 million ERDF

Targets to 2023:

- **10%** of species and habitat types of Community interest demonstrate an **improving conservation status**
- Measures to improve conservation status (restoration and management infrastructure) implemented on at least **100 000 hectares** (**milestone to 2018: 30 000 ha**)



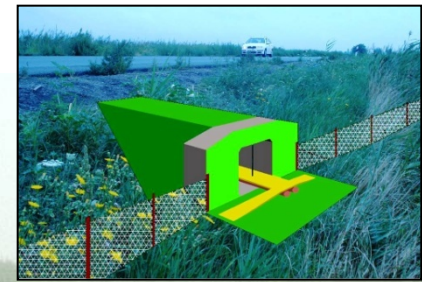


Environment and Energy Efficiency OP (PA4)



Measures

- Habitat restoration & species conservation measures (~60%)
- Management infrastructure (management machinery and equipment, monitoring and site surveillance infrastructure) (~30%)
- Interpretation infrastructure for Natura 2000 – pilot projects (~10%)
- Strategic surveys (e.g. mapping of ecosystems, evaluation of ecosystem services) (~1,5%)



Beneficiaries:

- National Park Directorates + partners

Target Area:

- Natura 2000 sites, protected areas and beyond





Economic Development and Innovation OP (PA6)



Priority Axis 6 – Tourism:

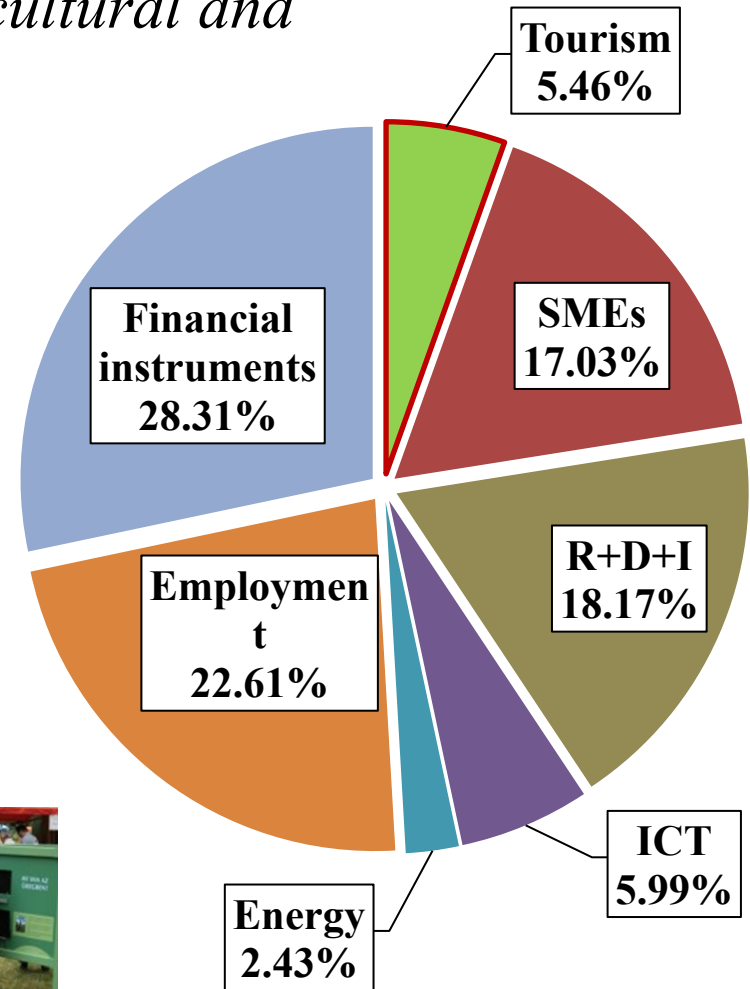
Increasing tourism-related spending on cultural and natural heritage sites

Funding (PA6): € 507,6 million ERDF

Targets to 2023:

- Spending of international and national tourists **increases by 10%**
- The **expected number of visitors** on cultural and natural heritage sites **increases to 2 352 000**

Milestone to 2018: 689 000





Economic Development and Innovation OP (PA6)



Measures

- Networks of cultural and natural heritage sites of national or international importance (e.g. thematic routes)
- Attractions of international significance (e.g. world heritage sites, castles, religious sites)
- **Interpretation of natural values as tourism attractions (national parks, Geoparks, world heritage sites)** – app. 13% of PA6 allocation (~ € 11 million)
- Health tourism sites



Beneficiaries:

- National Park Directorates (nature-based ecotourism only)



Criteria for investments:

- Need for central coordination, national/international importance, network-approach



**Thank you for your
attention!**

