

V4+ MEETING ON NATURE PROTECTION

24th April 2015, Bratislava

Eva Vozenilkova
Czech Republic - Ministry of Environment
Department of General Nature and Landscape Protection
Vrsovicka 65, CZ 100 10 Praha
Eva.vozenilkova@mzp.cz

Ministerstvo životního prostředí
České republiky

Ministerstvo životního prostředí
Vršovická 65, 100 10 Praha 10
Česká republika

www.mzp.cz



MAPPING AND ASSESSMENT OF ECOSYSTEM SERVICES CZ BRIEF INFORMATION

Ecosystem services as a topic of administration

- has been taken into account by the Ministry within the goals of European Biodiversity Strategy to 2020 last years (*theoretical background & information exchange, focused research and pilot projects, National Environmental Policy 2012 – 2020*)
- 2015 explicitly integrated into the organizing structure of the ministry = responsibility assigned to the particular department(s)
- will be worked up in accordance with the Methodological Framework



MAPPING AND ASSESSMENT OF ECOSYSTEM SERVICES CZ BRIEF INFORMATION

- (Czech) National Biodiversity Strategy 2005-2015 has not incorporated ecosystem services explicitly at the time of its completion
 - revision of the Strategy for 2015 – 2025 is going on
 - ▶ ▶ ▶ it will incorporate ecosystem services concept:
- to follow the recommendations for the National Ecosystem Assessment as an integrated multi-stakeholder process



MAPPING AND ASSESSMENT OF ECOSYSTEM SERVICES CZ BRIEF INFORMATION

Consolidated Layer of Ecosystems (CLEs version 1.0)

CZECH NATURE CONSERVATION AGENCY
CZECH GLOBE

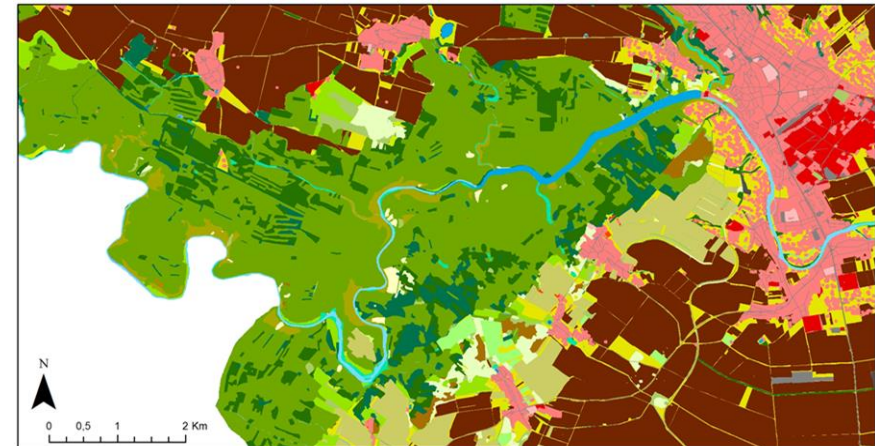
- key contribution to the mapping of ecosystem services
- combination of different data sources

Terrestrial habitat mapping
ZABAGED

Urban Atlas

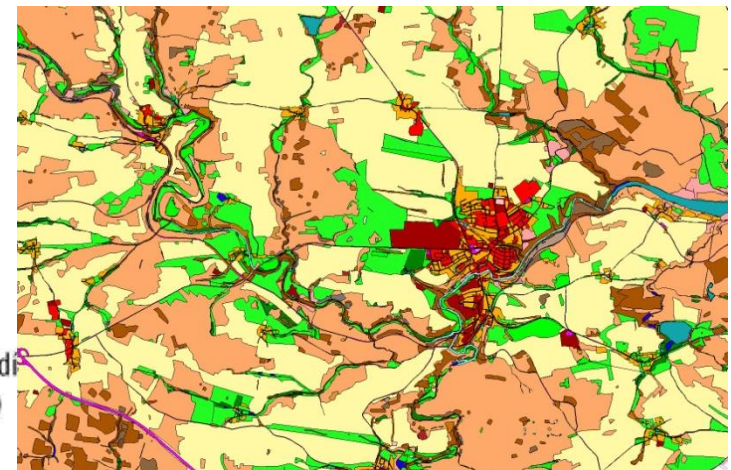
CORINE Land Cover 2006

DIBAVOD – watercourses and ponds
etc.



Legend

Natural grasslands	Forest	Water bodies	Permanent cultures	Industrial unites
Permanent grasslands	Urban green areas	Water courses	Rocks	Continuous urban fabric
Wetlands	Arable land	Scrub	Infrastructure	Discontinuous urban fabric



MAPPING AND ASSESSMENT OF ECOSYSTEM SERVICES CZ BRIEF INFORMATION

Consolidated Layer of Ecosystems (CLES version 1.0)

- uses comprehensive hierarchical classification of ecosystems available in the Czech Republic
 - identifies 41 ecosystem categories in 6 groups
 - primarily distinguishes „natural“, „semi-natural“ and „artificial“ (human-dominated) ecosystems
- ▶ ▶ ▶ will be updated in connection with source data update in the future



MAPPING AND ASSESSMENT OF ECOSYSTEM SERVICES CZ BRIEF INFORMATION

Methodological framework for the integrated assessment of ecosystem services in the Czech Republic

- output of the research project **ENVISERV** of Czech Globe (first comprehensive EC Assessment in CZ - 2013)
- contains concepts, approaches and principles for a national assessment of ecosystem services
- adopted by the CZ Ministry of Environment (2014) as a basis for achieving relevant strategic goals



MAPPING AND ASSESSMENT OF ECOSYSTEM SERVICES CZ BRIEF INFORMATION

Methodological framework for the integrated assessment of ecosystem services in the Czech Republic

- combines approaches to biophysical assessment, indicators and mapping of ecosystem services, experimental ecosystem accounting, economic valuation of ecosystem services and social values
- incorporates recommendations for the structure of national assessment and involvement of stakeholders, including strategic scenario planning

<http://www.ecosystemservices.cz>



MAPPING AND ASSESSMENT OF ECOSYSTEM SERVICES CZ BRIEF INFORMATIO



RUNNING PROJECTS

Total risk assessment and vulnerability of ecosystem services

- integrated assessment of global change impacts on environmental security of the Czech Republic (*Security Research project VG20122015091, Ministry of Interior*)
- developing methodologies and applications for total risk assessment and vulnerability of ecosystem services
- output: Map application containing multiple hazards, vulnerability and ecosystem services value maps.

More details: <http://www.envisec.cz>



MAPPING AND ASSESSMENT OF ECOSYSTEM SERVICES CZ BRIEF INFORMATIO



RUNNING PROJECTS

Total risk assessment and vulnerability of ecosystem services

- combines multiple hazards assessment (for example, productive soil loss and erosion, invasive species, pollution, floods) and vulnerability assessment
- higher total risk scores (close to 1) represent areas with high risk; over 8 % of the area of the Czech Republic was classified at high risk, including areas with high nature values.



MAPPING AND ASSESSMENT OF ECOSYSTEM SERVICES BRIEF INFORMATION

That's it!

Ministerstvo životního prostředí
České republiky

Ministerstvo životního prostředí
Vršovická 65, 100 10 Praha 10
Česká republika

www.mzp.cz

